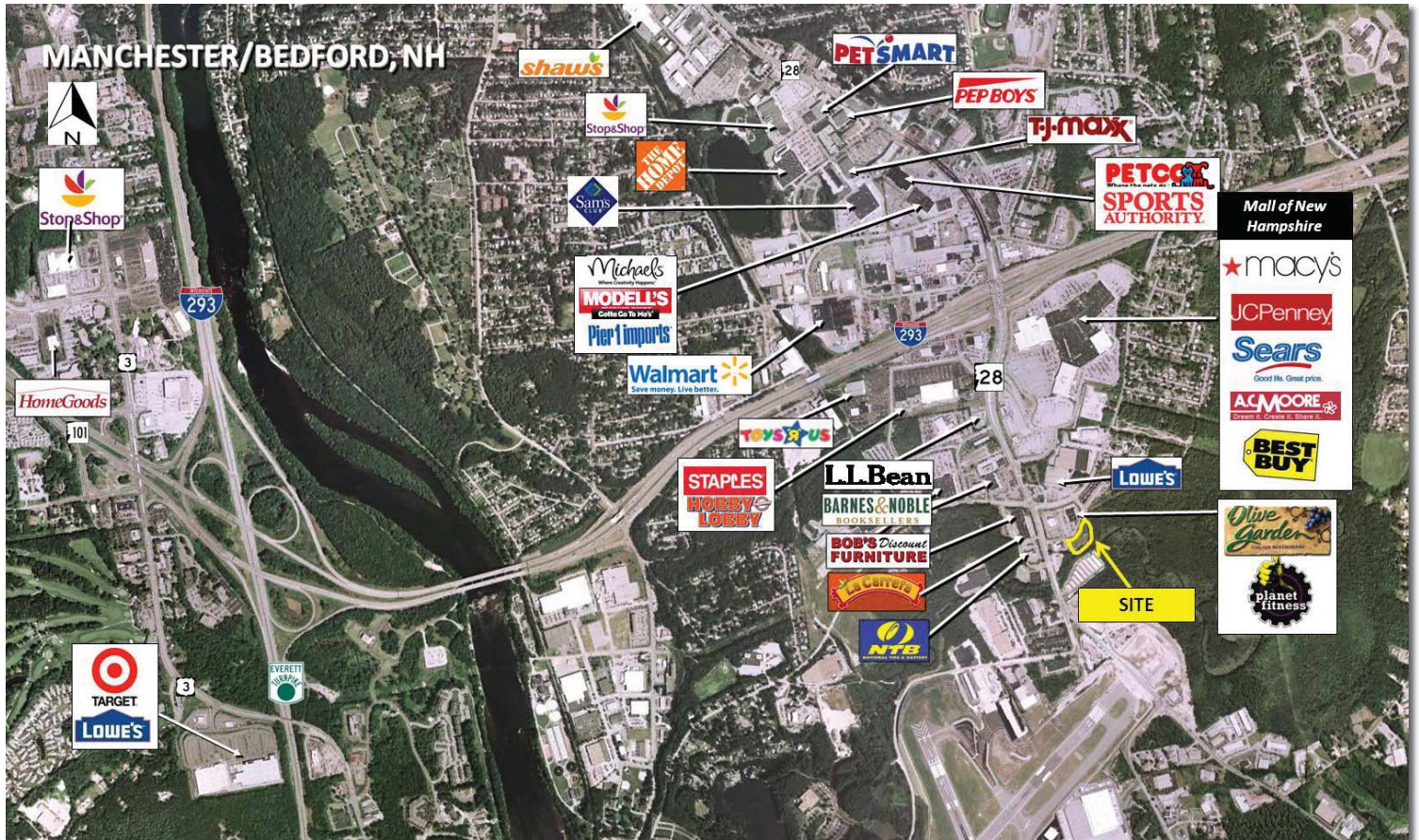


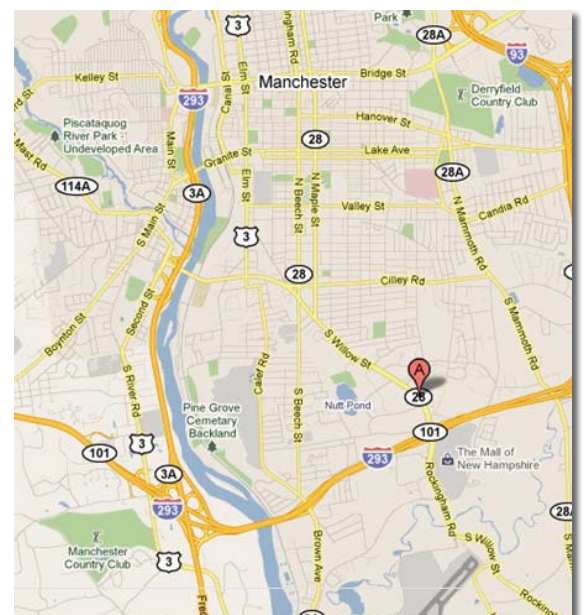
1888 S. Willow Street - Manchester, NH 03102

1+ Acre Pad Site



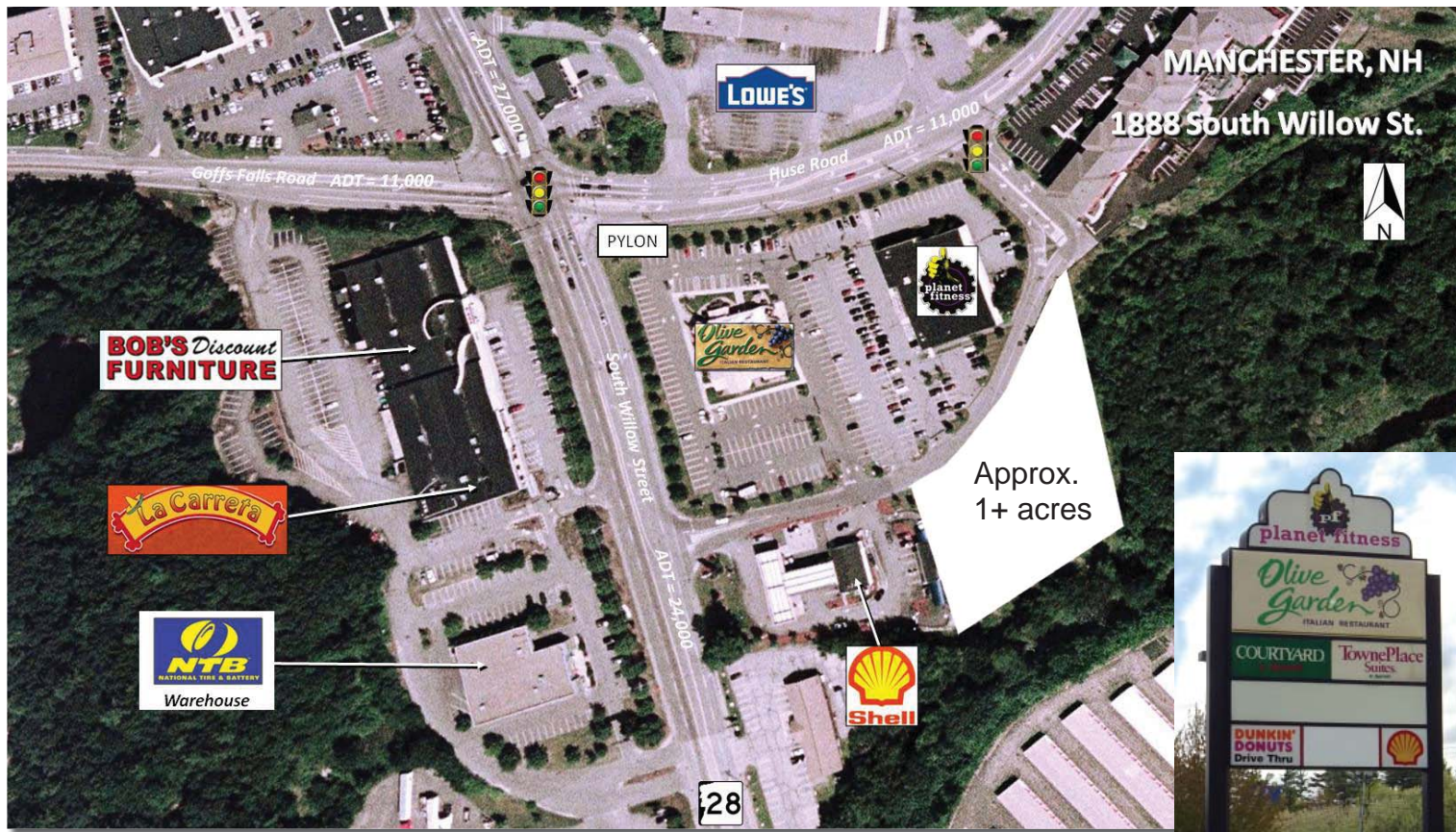
Property Information

- Approximately 1+ acre pad site available
- Join area retailers Bob's Discount Furniture, Lowes Home Improvement, Olive Garden, Planet Fitness and others
- Pylon signage with excellent exposure
- Combined ADT of South Willow & Goffs Falls Rd. = 38,000 vpd
- Site access via two signalized entrances
- Less than 1/4-mile from the Mall of New Hampshire



1888 S. Willow Street - Manchester, NH 03102

1+ Acre Pad Site



DEMOGRAPHICS

Radius	Population	Households	Med HH Income
1 mile	3,072	1,383	\$67,144
3 miles	56,902	22,531	60,705
5 miles	129,653	51,687	62,102

Drive Time	Population	Households	Med HH Income
5 min	24,282	9,721	\$64,136
10 min	127,295	51,625	60,927
15 min	204,126	79,654	65,379

