

SHAW'S PLAZA - AUBURN, ME
600 Center Street, Route 4



DEMOGRAPHICS			
Drive Time	Population	Median HH Income	Average HH Income
5 min	6,238	\$32,670	\$39,583
10 min	46,120	35,643	44,511
15 min	59,142	38,444	48,193

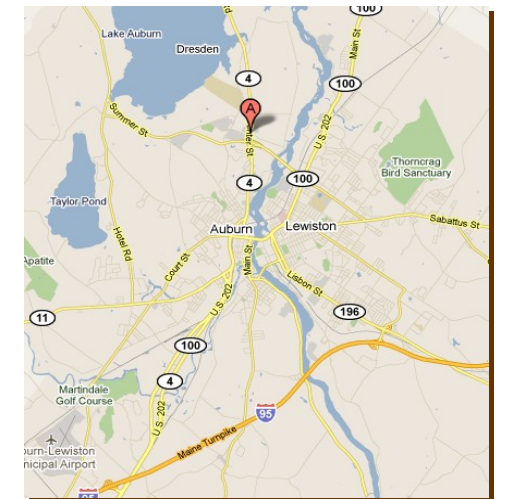
The information contained herewith has been obtained from sources believed reliable. While we do not doubt its accuracy, we have not verified it and make no guarantee, warranty, or representation about it. It is your responsibility to independently confirm its accuracy and completeness. You and your advisors should conduct a careful, independent investigation of the property to determine, to your satisfaction, the suitability of the property for your needs. 9-8-2011

SHAW'S PLAZA - AUBURN, ME
600 Center Street, Route 4



Property Information

- 1,825 sf and up to 20,000 sf (subdividable)
- 100,000 sf Shaw's Supermarket anchored shopping center
- Strategically located in the center of the Auburn retail regional trade area, next to the Auburn Mall
- Two signalized entrances
- Highly visible center with pylon signage
- Growing trade area. TD Banknorth opened 60,000 sf Northeast Call Center
- ADT = 26,200



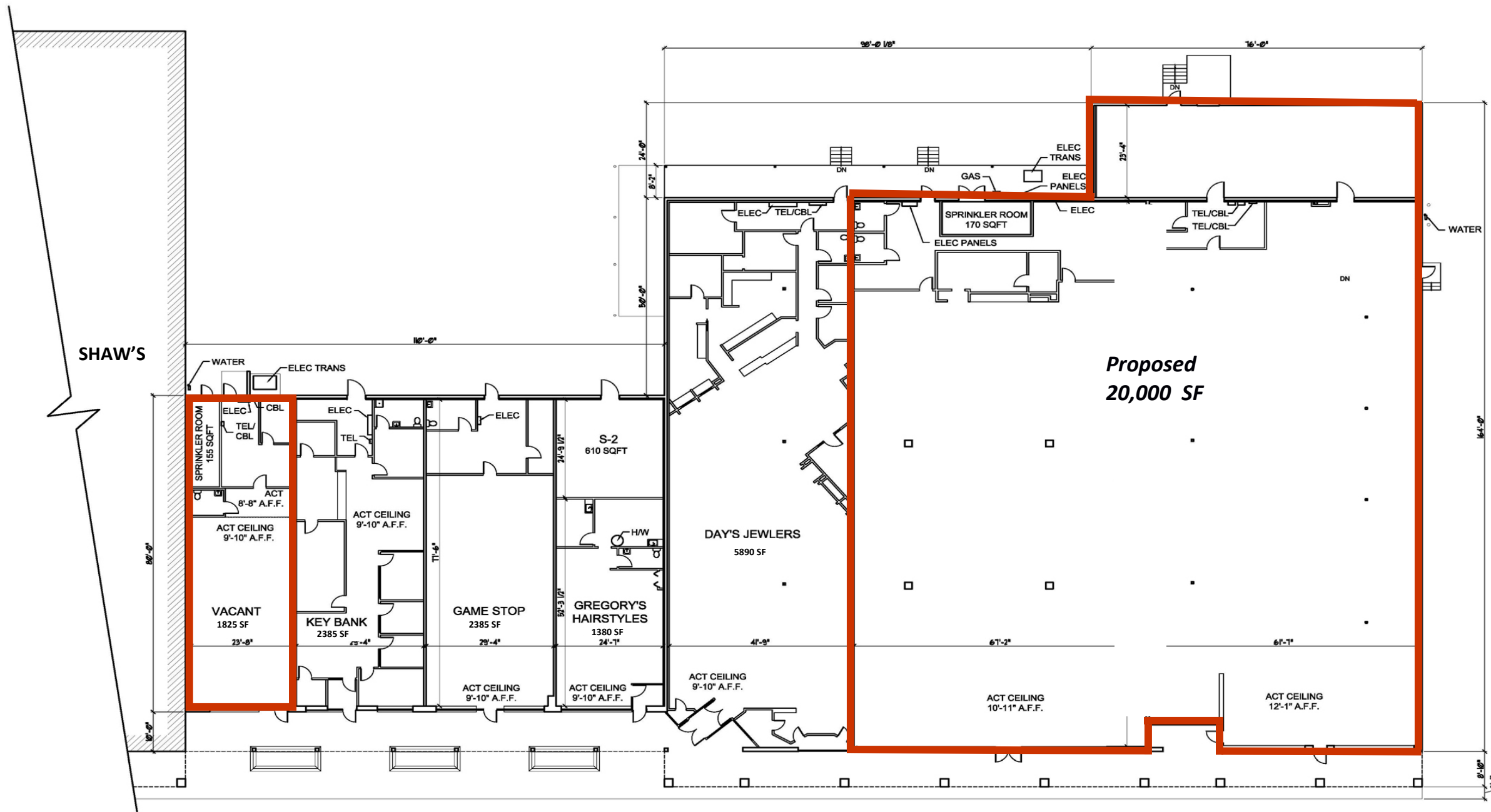
RETAIL FOR LEASE

600 CENTER ST, ROUTE 4 - AUBURN, ME



1,825 SF available

Front Elevation



Floor Plan

Area retailers include:

- Super Walmart
- Lowe's
- Best Buy
- JC Penny
- Kmart
- Bed Bath & Beyond
- Kohl's
- Famous Footwear
- Petco
- Bjs Wholesale Club
- TJ Maxx

FOR MORE INFORMATION:

Jeff Bruk
jbruk@boylstonrealty.com

Dan Rabazzi
drabazzi@boylstonrealty.com