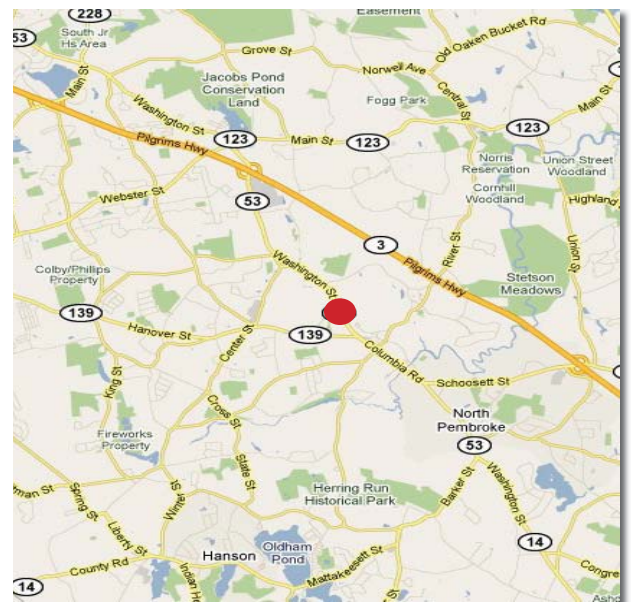


HANOVER, MA 35 Columbia Road - 9,800 SF



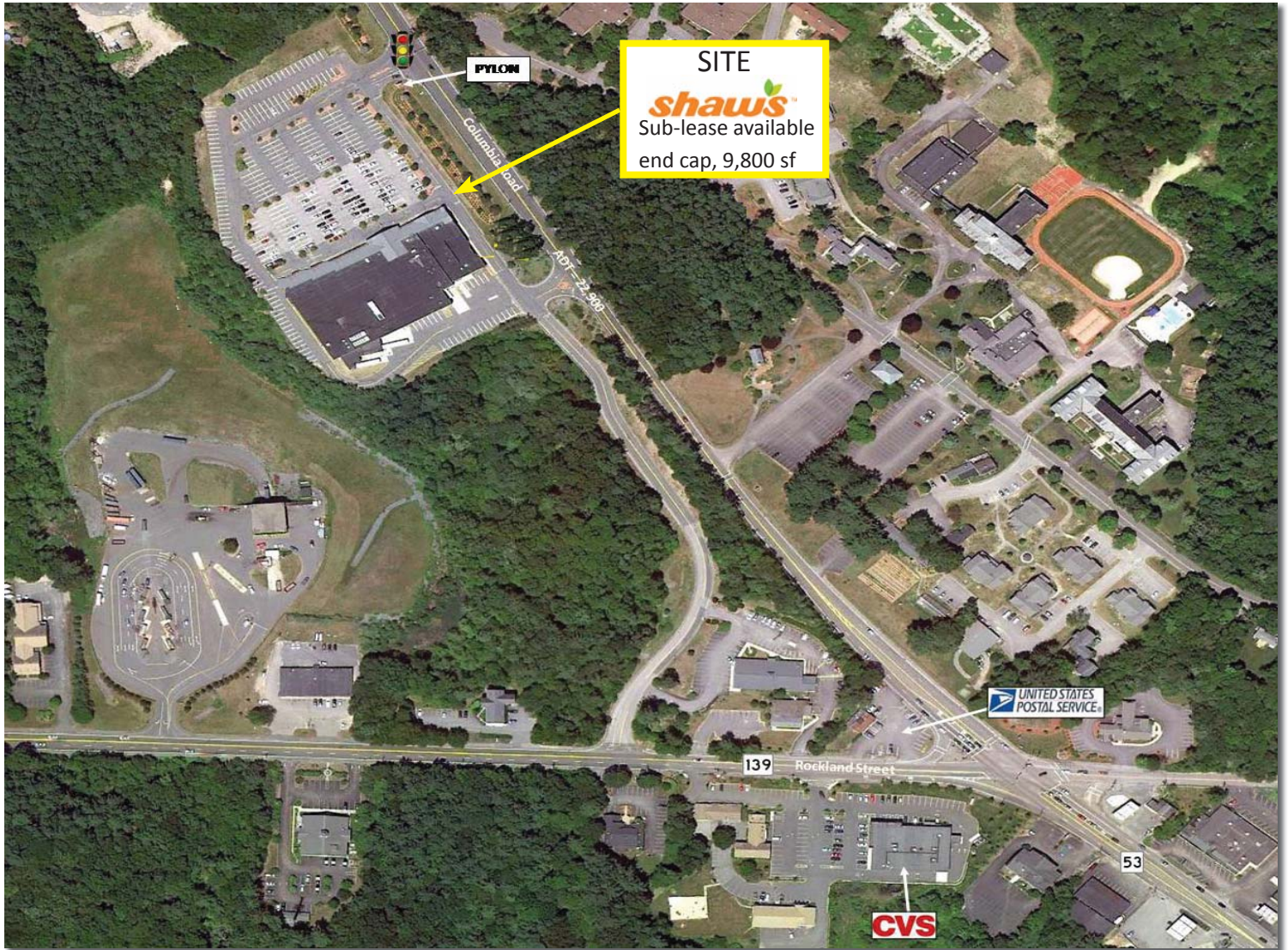
Property Information

- 58,000 sf Shaw's Supermarket anchored shopping center
- 9,800 sf for sub-lease, end cap adjacent to Shaw's
- Regional trade area retailers: Target, Walmart, Petsmart, Borders, Michael's Crafts, JC Penny, Trader Joes, Pier One Imports and Sears.
- Signalized main entrance
- Large highly visible pylon signage
- Growing regional trade area. Target and Petsmart opening in 2010
- ADT - 22,900



Contact Jeff Bruk - jbruk@boylstonrealty.com
978.657.4600

**SHAW'S PLAZA
HANOVER, MA**



FOR MORE INFORMATION:
Jeff Bruk
jbruk@boylstonrealty.com

Drive Time	Population	Median HH Income	Average HH Income
5 min	4,126	89,956	110,288
10 min	39,042	92,012	110,658
15 min	145,871	82,987	99,455

Boylston Realty Advisors, Inc
355 Middlesex Avenue, Suite 7
Wilmington, MA 01887-2163
978.657.4600
boylstonrealty.com

The information and images contained herewith have been obtained from sources deemed to be reliable. However, Boylston Realty Advisors makes no guarantee, warranty, or representation as to the accuracy or completeness thereof. Images shown may not be current and may be modified for illustrative purposes. 6-8-11

